

MULTIPULSE PRO DUO

THE FLEXIBLE CO₂ LASER
FOR SOFT TISSUE
SURGERY

- ⊕ Innovative Hollow Fiber
- ⊕ Six different Scanning Shapes
- ⊕ Standard Articulated Arm
- ⊕ Variety of handpieces
- ⊕ Multidisciplinary



BORN TO SIMPLIFY

KEY FEATURES

High Power RF EXITED CO₂ Laser:
Offers 60 W or 40 W maximum power

Suitable for a variety of soft tissue treatments:
e.g. for ENT, gynecology, neurosurgery and general surgery

Innovative Technology:
MultiPulsePRO DUO laser comes with innovative technology such as the **hollow fiber**

Different Scanning Options:
Provides different **scanning options** and **handpieces** to maintain flexibility for the surgeon

Smart Pulse PSD:
Pulse Shaped Design Technology for optimal pulse

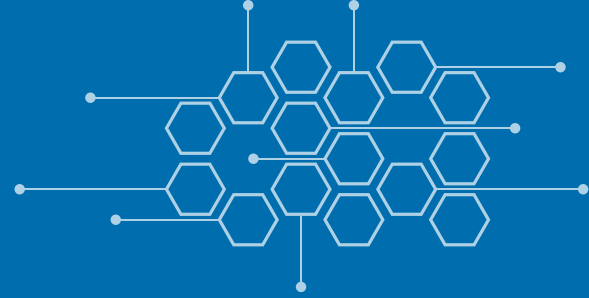
EasySpot Hybrid Micromanipulator:
Enables to operate on even narrow surgical fields

Scanning system HiScan Surgical:
With **ESLA technology** (Electronic Scanned Laser Ablation) for complete control of the density, type and scanning speed, ablation depth and coagulation percentage when cutting

HOLLOW FIBER - BORN TO SIMPLIFY

The **MultiPulse PRO DUO** comes with the innovative hollow fiber with different handpieces for applications in ENT, neurosurgery, gynecology and general surgery.

The waveguide is manufactured by Laser Engineering and has been cleared by FDA with K112166. It is supplied in 2m length and two diameters and can be used also with various handpieces having different lengths and shapes manufactured by TTI Medical and cleared by FDA with K952006.



APPLICATIONS

SOFT TISSUE TREATMENTS

The **MultiPulse PRO DUO's** wavelength of **10,600 nm** is being absorbed mainly by water and therefore has excellent tissue cutting properties with very low lateral tissue damage.

The **MultiPulse PRO DUO CO₂** laser is intended for surgeries in **ENT, gynecology, neurosurgery and general surgery**. In these medical fields, the laser system is highly appreciated for the high degree of precision in cutting combined with an excellent coagulation effect.

In surgical practice, **the MultiPulse PRO DUO** can be used with handpieces of the "not bold" focal lengths and spots, intended for:



A wide range of handpieces are available for the **MultiPulse PRO DUO**, with different spot sizes and high performance in specific fields of application. Additionally, different scanning units, micromanipulators enable treatments that are tailored to specific pathologies.

Technical Specifications

MULTIPULSE PRO DUO

Laser Source	CO ₂ RF-PSD
Wavelength	10,600 nm
Emission Mode	ContinuousWave (CW) – Ultimate Pulse (UP) – Smart Pulse (SP) – Deep Pulse (DP) – High Pulse (HP)
Power	0.1 – 60 W* *limited to 40W when Hollow Fiber is selected
Emission Time	0.01 – 0.9 s
Beam Delivery	Articulated arm with 7 mirrors and counterweight Hollow Fiber: max. 40 W
Aiming Beam	Laser Diode @ 635 nm - 4 mW
Control Panel	LCD color touch screen
Accessories	Handpieces: 1.5", 2", 4", 5"; 7", 8" Other: Scanners and Micromanipulators
Electrical Requirements	100 - 230 V~ 50/60 Hz 1,200 VA (max.)
Dimensions and Weight	174 cm (H) x 59 cm (D) x 66 cm (W), ca. 75 kg

Specifications are subject to change without notice.

MP PRO DUO 003 1024 US

FDA
510(k) FDA cleared
under K181867



ALWAYS THE
LATEST PRODUCT
INFORMATION



JenaSurgical is the brand of the surgical business
unit of Asclepion Laser Technologies.
BROCHURE ONLY FOR THE U.S.A.

